

## JS-M2J22-F2A Data Sheet v0.1

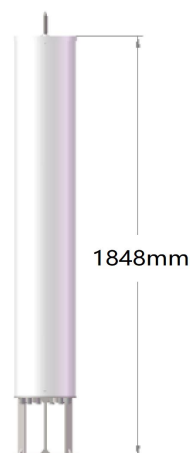
XXX Pol,617-894/1710-2690/1710-2690MHz  
 65/65/65 Horizontal Beamwidth,14.4/18.0/18.0dBi  
 E-tilt:2-14/2-12/2-12  
 1.85m 6-Port 1L2M 3-Sector Antenna with Integrated RCU

## Electrical Properties(BASTA 11.1)

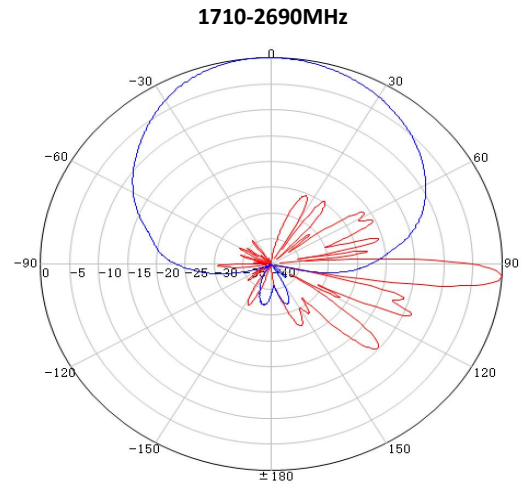
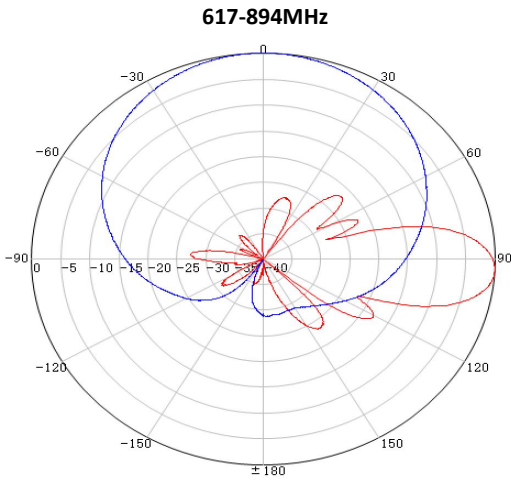
Frequency Band(MHz)	617-894(R1)		1695-2690(Y1,Y2)			
	617-745	745-894	1695-1990	1920-2200	2300-2400	2490-2690
Polarization	±45°		±45°			
Gain(dBi)	14.0±0.5	14.4±0.5	17.0±0.3	17.1±0.5	17.3±0.5	18.0±0.5
Horizontal 3dB Beam Width(°)	70±5	67±5	63±5	67±5	67±5	63±5
Vertical 3dB Beam Width(°)	16.5±2.0	13.5±1.5	7.5±0.6	6.9±0.6	6.0±0.3	5.5±0.3
Front to Back Ratio at 180±30°(dB)	25	25	25	25	25	25
Cross Polar Ratio at 0°(dB)	17	17	17	17	17	17
Cross Polar Ratio Sector ±60°(dB)	10	10	8	8	8	8
1st Upper Sidelobe Suppression(dB)	15	15	17	17	17	17
Electrical Downtilt(°)	2-14		2-12			
VSWR	< 1.5		< 1.5			
Cross-polar Isolation(dB)	>25		>28			
Interband Isolation(dB)	R1//Y1,Y2>28					
3rd Order PIM(dBc) @2 x 43dBm	< -150		< -150			
Impedance(Ω)	50		50			
Power Handling(W)	300		250			

## Mechanical Specifications

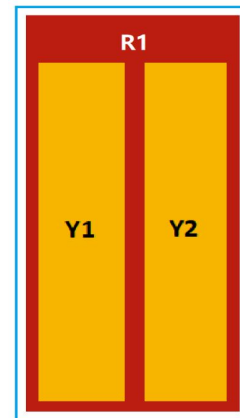
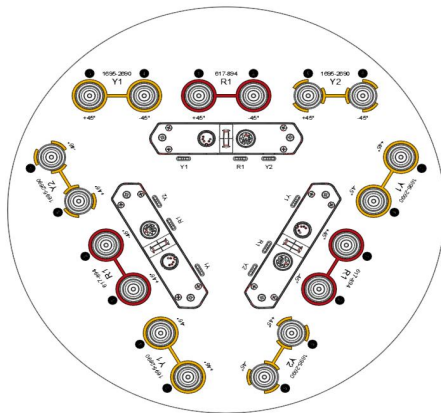
Antenna Dimensions (HxWxD) (mm)	1848 x φ400
Packing Dimensions (HxWxD) (mm)	2040 x 500 x 500
Lightning Protection	DC Ground
Antenna Weight (kg)	51
Packed Weight (kg)	59
Connector	18 x 4.3-10 Female
Radome Material	FRP
Mounting Kits(included)	Flange Mounted
Operating Temperature Range(°C)	-40-+65
RET Type	Integrated RCU
RET Protocols	AISG 2.0/3GPP



Pattern sample for reference



Layout of interface



Array ID	RF Connector	RET(S RET)	Frequency(MHz)	AISG RET UID
R1	1-2	2	617-894	MKxxxxxxxxxxxxxxxxR1
Y1	3-4	1	1695-2690	MKxxxxxxxxxxxxxxxxY1
Y2	5-6	3	1695-2690	MKxxxxxxxxxxxxxxxxY2

\* For more information, please refer to the specification of RET.

Accessories

Item	Model	Weight	Mechanical Tilt Range	Quantity
Mounting Kit	/	/	-10°~+10°	1